



THE WASHINGTON ARCHAEOLOGIST

WASHINGTON ARCHAEOLOGICAL SOCIETY

REPRINT

VOLUME &%, NUMBER %, PAGES % (| : 96FI 5FM19++

THE BASKETRY OF 45SN100

BY DEBBIE PADDEN

THE BASKETRY OF 45SN100

by Debbie Padden

Editor's Note: This paper was written by a student enrolled in an anthropology course at Seattle Central Community College. Only the basketry and matting from the site are considered; none of the knots or cordage have been analysed for this paper.

Site 45SN100, near Duvall, Washington, is located on the Biederbost family farm. Some artifacts were discovered by the family who contacted the Washington Archaeological Society. The artifacts that have been excavated and catalogued as of June 1976, were found along the Snoqualmie River bank and in the river bed. As they had been compressed between layers of mud and clay they were preserved in an oxygen-free atmosphere and are remarkably intact.

Of the perishable artifacts excavated from this site, the matting and basketry have been classified according to a system of weave patterns set up and described by Dale Croes. In using this classification, only three weave types were discovered at 45SN100: open twining, checker, and twill.

Open twining requires three strands of material to make one stitch. Two horizontal strands encircle a vertical, twist once around themselves and encircle the next vertical strand.

Checker weave needs only two strands to make one stitch. Each horizontal strand that is in front of a vertical strand is placed behind the next vertical strand. To create the checker board effect, each vertical strand has alternating horizontal stitches in front and behind it all along its length.

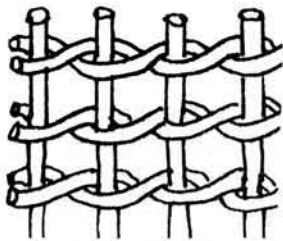
Twill requires three pieces of material to make one stitch. Two vertical strands are placed next to each other as if they were one strand. A horizontal strand is placed in front of these two and behind the next two. This pattern repeats in each row but is moved one vertical strand to the right of the row above it, thus creating a stair-step pattern.

The twill weave appeared as a fragment (body alone) only three times. When found as part of a basket it is always the bottom, therefore this weave pattern's main use was probably the bottom-work of baskets.

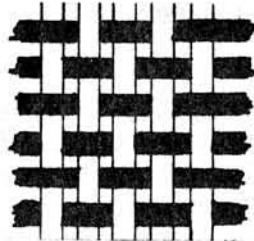
Fourteen pieces have been classified as open twining weave. One piece was a complete basket with a body, rim, and bottom. Two other artifacts have basket components; one has a body and bottom, the other has a body, rim and handle. The remaining eleven pieces are either fragments (body alone) or they contain a body and rim and/or reinforcement. Because of the usually delicate and airy weave, these fragments may have been used for light cover pieces as well as being fragments of whole basket containers.

The checker weave was found in 41 of the 58 basket artifacts.

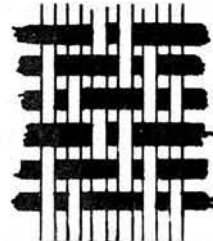
Only one of these was a whole basket; nine others have basket components such as body and handle, body, handle, rim and/or reinforcement. The remaining pieces contain only the body fragment with a rim and/or a reinforcement. These sturdier pieces may have been part of larger pieces of matting used in extensive coverage, large containers, or partitions used in the house or fishing industry.



Open Twining



Checker



Twill

Distribution of Woven Material by Weave

| | Open Twining | Checker | Twill |
|-------------------------------------|-----------------|---------|-------|
| 1. Fragment | | | |
| A. Body only | 7 | 9 | 3 |
| 2. Partial Baskets | | | |
| A. Body, bottom | 1 | | |
| B. Body, rim | 3 | 4 | |
| C. Body, handle | | 2 | |
| D. Body, reinforcement | | 8 | |
| E. Body, rim, handle | 1 | | |
| F. Body, rim, reinforcement | 1 | 10 | |
| G. Body, reinforcement, handle | | 2 | |
| H. Body, rim, reinforcement, handle | | 5 | |
| 3. Whole Baskets | | | |
| A. Body, rim, bottom | 1 | 1 | |
| Totals | 14 | 41 | 3 |

Paradigmatic Classification of Woven Materials

| Category | Class | Formal Dimension |
|----------|----------------------|-------------------------------------------------------------------------------------------------------------|
| I | A Body weave | 1 checker weave 2 open twining 3 plain twining 4 check on bias 5 twill weave 6 twill on bias |
| | B Body rimwork | 1 present 2 absent |
| | C Body reinforcement | 1 single weave 2 double weave 3 no reinforcement |
| II | A Rim | 1 present 2 absent |
| | B Rim weave | 1 diagonal twining 2 tucked 3 braid 4 diagonal twining and tuck 5 no rim weave |
| III | A Handle | 1 present 2 absent |
| | B Shape | 1 twisted cord 2 straight cord 3 none |
| | C Placement | 1 rim 2 body 3 bottom 4 body rimwork 5 none |
| IV | A Bottom | 1 present 2 absent |
| | B Weave | 1 twill 2 twill on bias 3 checker 4 checker on bias 5 none |
| V | A Knotted Cordage | 1 straight cord 2 twisted cord |

Paradigmatic Distribution of Woven Materials

| Artifact Number | I Body | II Rim | III Handle | IV Bottom | V Knotted Cordage |
|-----------------|--------|--------|------------|-----------|-------------------|
| A | A1B1C1 | A2B5 | A2B3C5 | A2B5 | |
| B | A1B1C2 | A2B5 | A2B3C5 | A2B5 | |
| D | A1B1C2 | A2B5 | A1B1C4 | A2B5 | |
| E | A1B1C2 | A2B5 | A2B3C5 | A2B5 | |
| 131a | A2B2C3 | A2B5 | A2B3C5 | A2B5 | |
| 131b | A2B2C3 | A1B3 | A1B1C1 | A2B5 | |
| 134 | A3B1C2 | A1B1 | A1B1C4 | A2B3 | |
| 135a | A2B2C5 | A2B5 | A2B3C5 | A2B5 | |
| 135b | A2B2C3 | A2B1 | A2B3C5 | A2B5 | |
| 137a | A1B2C2 | A1B1 | A1B1C4 | A2B5 | |
| 328a | A1B1C1 | A2B5 | A2B3C5 | A2B5 | |
| 328b | A1B1C1 | A1B1 | A2B3C5 | A2B5 | |
| 329 | A1B2C5 | A1B2 | A1B1C1 | A2B5 | |
| 330 | A1B1C2 | A1B2 | A2B3C5 | A2B5 | |
| 332 | A2B2C3 | A2B5 | A2B3C5 | A2B5 | |
| 334 | A2B2C3 | A2B5 | A2B3C5 | A2B5 | |
| 335 | A1B1C1 | A1B2 | A1B1C4 | A2B5 | |
| 337 | A1B1C2 | A2B5 | A2B3C5 | A2B5 | |
| 2000 | A2B]C2 | A1B1 | A1B1C1 | A1B2 | |
| 2001 | A2B2C5 | A2B5 | A2B3C5 | A1B3 | |
| 2002 | | | | | A2 |
| 2003 | | | | | A2 |
| 2004 | | | | | A1 |
| 2005 | | | | | A2 |
| 2006 | | | | | A2 |
| 2008 | | | | | A2 |
| 2009 | | | | | A1 |